

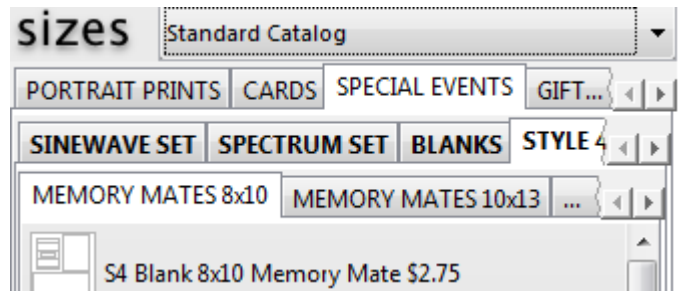
New Features in ProFilmet RDS Version 9

Home Screen

After a successful Log In, the button changes to **Log Out**, and it is not necessary to click it each time.

In the **Preferences area**, under the login, there is a checkbox for "**Wrap Tabs in Products**". When checked, all tabs are shown.

If unchecked, each tab level shows several tabs and hides the rest. Arrows on the right allow access to other tabs. Use this if you want to see less tabs, or need more space. This feature is only available for Windows, and a re-launch is required.



Designer Tools

Designer Tools in the upper left corner of the workspace now include the **Layer Up** and **Layer Down** tools.

There are four tools for **Image Node Alignment**. Select multiple nodes and click the tool for the edge that you want to align to. They will align with the one that is most to the left, right, top, or bottom.



The **Grid** and **Montage** tools have moved to the **Options palette Tools Tab**.



Cropping Tools are embedded in their image nodes instead of on a dropdown toolbar.

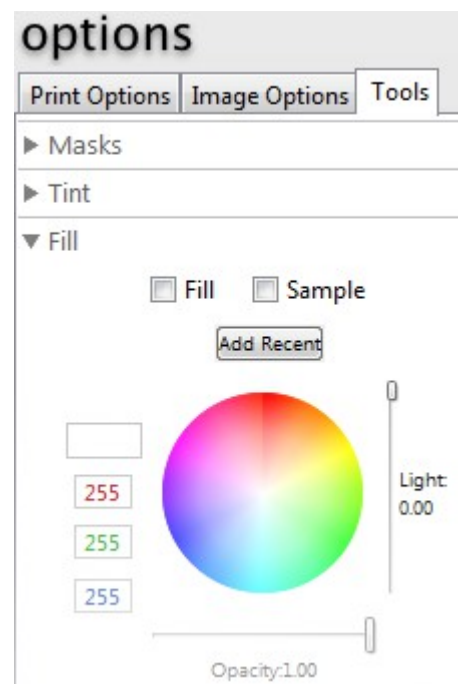
Options Palette - Tools Tab

The **Designer Node Tools** that were on the node dropdown toolbars are now on the the **Options palette**, on the new **Tools Tab**.

Image Node Tools

Masks, **Tints**, **Shadow**, and **Opacity** function the same. Click the triangle to expand the option.

Fill and **Stroke** have added a color picker and a slider for light to dark. The **Sample** checkbox will un-select after a color is picked and the mouse button is released. The boxes that display the **RGB value** of the color shown, may also be used to enter a value. Tab to move between boxes.



Text Node Tools

When you click in a text node on a product, the **Text** and **Text Color** tools appear in the Options' Tools Tab. Most text nodes will have a **Text** box to type in and a **Text Color** option with a color picker.

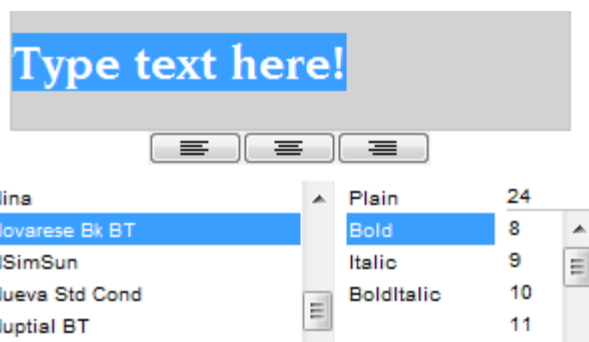
Styled Text Node Tools

Some products will have the new **Styled Text**.

If enabled, you will see these enhanced text options:

- **Styled Text box** - Type in the box and see the display on the product
- **Text Alignment** - Left, Center, Right
- **Font** - Choose from any font on your computer
- **Style** - Plain, Bold, Italic, BoldItalic
- **Size** - From 8 - 95, or type in the box that displays the current size
- **Text Color** - Same as standard text option

Styled Text allows more than one Font, Style, Size or Color within a single text node. Select only the text that you want to be affected by an option change.



The **Styled Text box** will show a triangle with exclamation point as a warning that your text will not fit in the actual text node on the product. Change the size of the text, or the size of the text node.



Favorites and Packages

The **Save Changes to Favorites** button is always available.



Packages show the layout of the package as it's icon. In a **Package**, the template's **Link** and **Delete** icons are now at the top.

Lock Images will save an image in a node until it is unlocked and changed. Save it as a **Favorite** or **Package** and the image will stay, even between launches. Save a studio or team logo in a template, or lock a team in a memory mate and use it in a package.

Events

Events and their data are now accessible in ROES before and after an order. Enter the **Data** for an event and generate the **Camera Cards** before the shoot. ROES can read the camera cards in the imported images and assign the images to the associated data. Create **Event Packages** through Favorites and Packages and assign fields to nodes. See the all package items together in the review.

Completing the Order

Promocodes are entered in the shipping wizard.